

From: Paul Frank <paulanddarci@gmail.com>
Sent: Thursday, January 20, 2022 10:15 PM
To: Six, Katrina <KMSix@roseville.ca.us>
Cc: Dreyer, Helen <hdreyer@roseville.ca.us>; Jed Roberts <jroberts@flo-analytics.com>; Mandell, Joseph <JMandell@roseville.ca.us>
Subject: Fwd: Suggested changed to Map C

EXTERNAL: This email originated from outside of the organization. Do not click on any links or open attachments unless you recognize the sender and know the content is safe.

I would like to submit the following changes to Map C:

Add all of Johnson Ranch NA to Dist 1

Add Cherry Glen and Thieles Manor NAs to Dist 2

Add all of Highland Reserve and Diamond Oaks (except little part west of Washington Blvd) NAs to Dist 3

Add Blue Oaks and Campus Oaks NAs to Dist 4

Add Fiddymment Farm NA south of Blue Oaks Blvd to Dist 5

This has a deviation of 9.5%, divides two NAs (Fiddymment Farm, and Pleasant Grove), allows growth in west Roseville be shared by two districts, gives east Roseville two councilmembers.

I would like to see 6 year voting gap figures on this map.

See the attached Tableau link for further details:

<https://public.tableau.com/app/profile/city.of.roseville.irc/viz/shared/TS2QFCNJK>

Thanks.

Paul

From: [Lisa Larkin](#)
To: [City Clerk](#); [Jed Roberts](#)
Subject: Map adjustments for consideration on Jan 24th - per Commission's request for public to submit
Date: Friday, January 21, 2022 2:07:47 AM
Attachments: [Below are some map adjustment ideas for Map E.pdf](#)

EXTERNAL: This email originated from outside of the organization. Do not click on any links or open attachments unless you recognize the sender and know the content is safe.

Hello there!

Per the commissioners, I am sending some amended map options for consideration by the Independent Commission on the 24th of January.

I have attached a document that has 5 adjusted map alternatives using Maps E, F, and D.

I have included what map was used (both letter and number), what was adjusted, the new deviation, map images with mark up of areas changed, as well as links to the maps on Tableau.

Please forward this email and attachment to all the commissioners for their review.

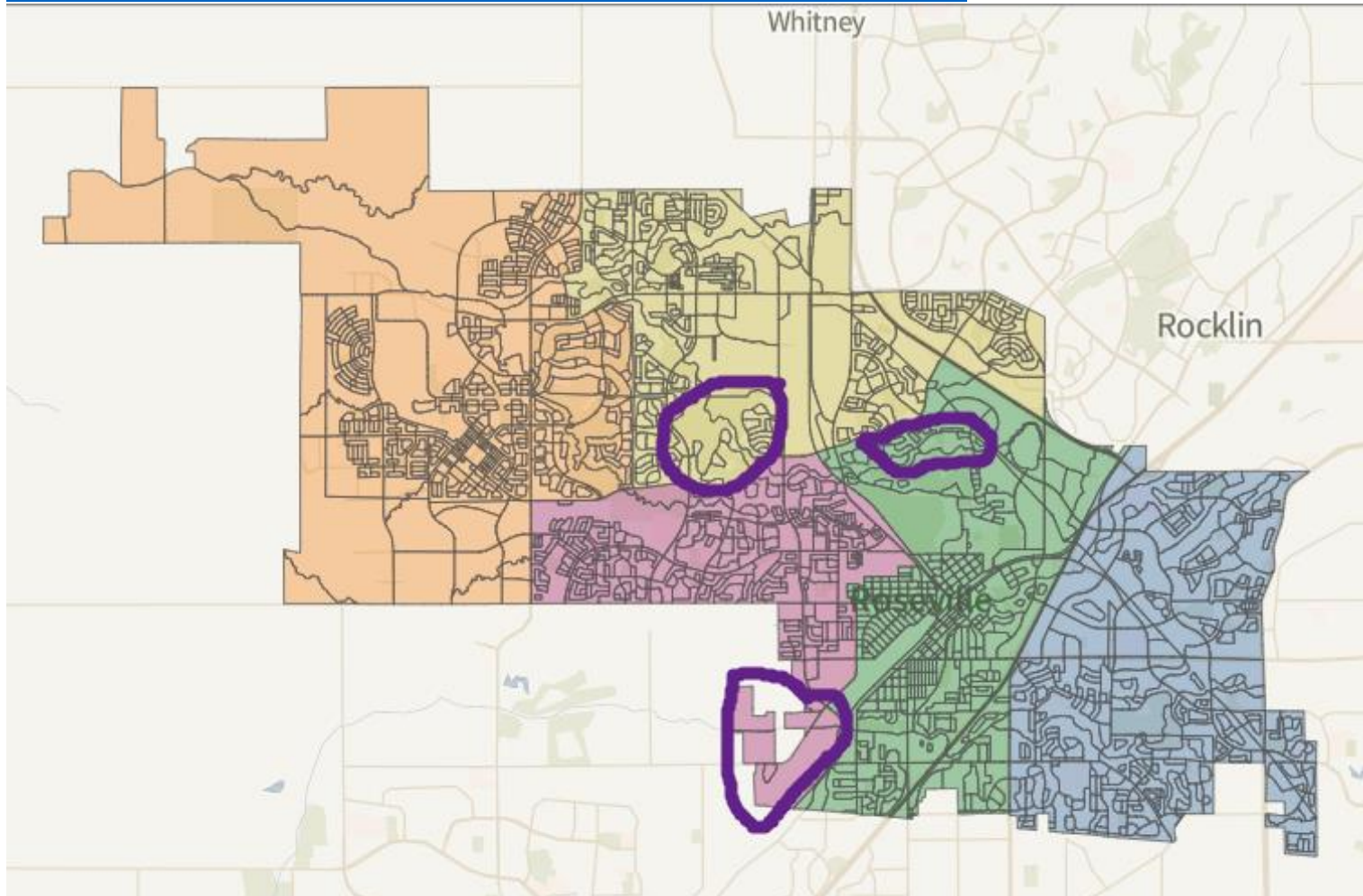
Thank you,

Lisa Larkin

Below are some map adjustment ideas for Map E, F, and D:

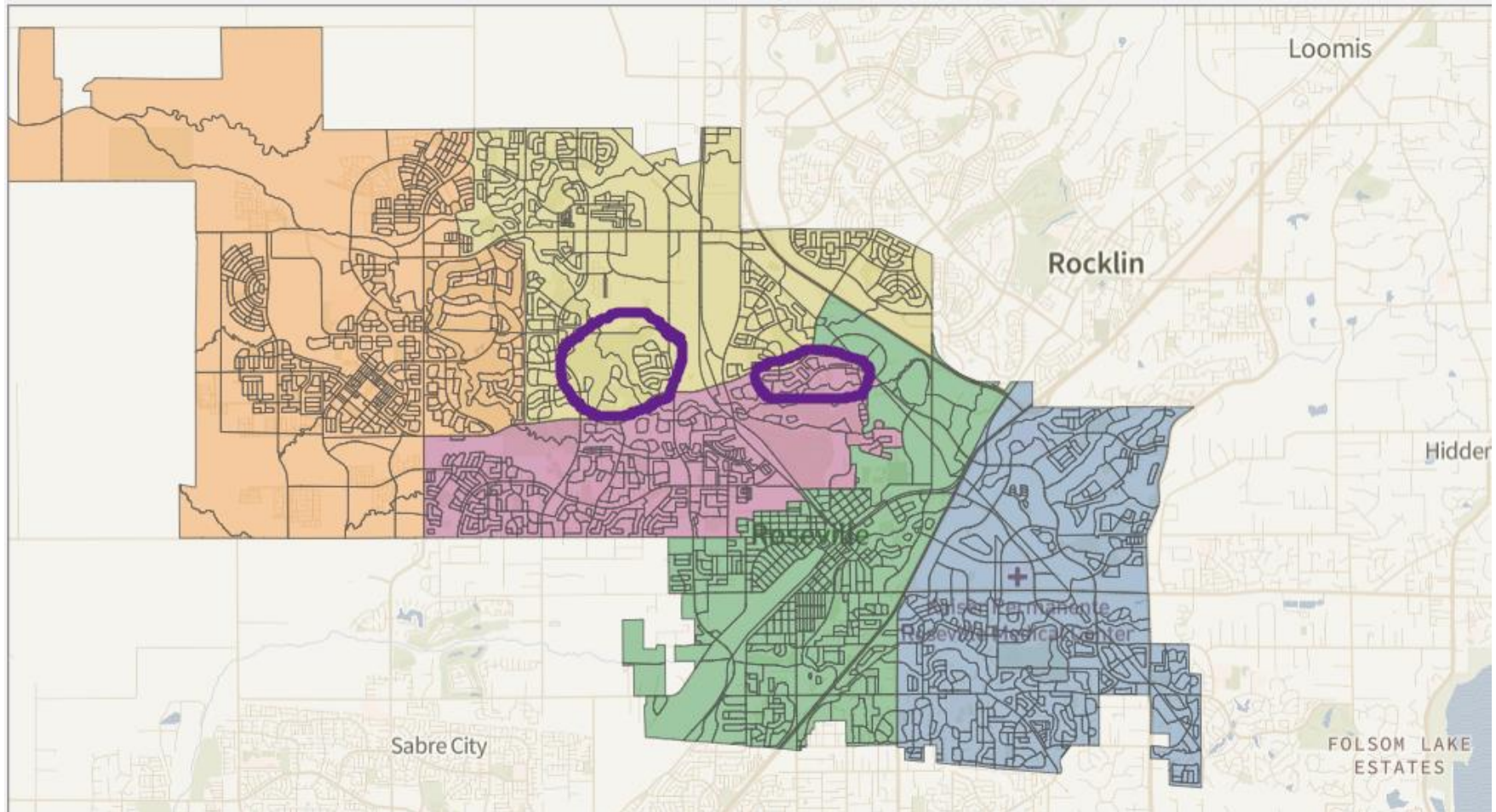
Map E alternative 1 (map 15): This one divides only 2 NA's – Pleasant Grove on the south side and Highland reserve on the south side. 7.1% deviation, **Moved Pleasant Grove north of Pleasant Grove to D3, moved Highland Reserve south of Pleasant Grove to D2, moved tail west of the railroad to D4. (Clean up Pleasant Grove line and west rail yard)**

https://public.tableau.com/shared/6R8W347T4?:display_count=n&:origin=viz_share_link

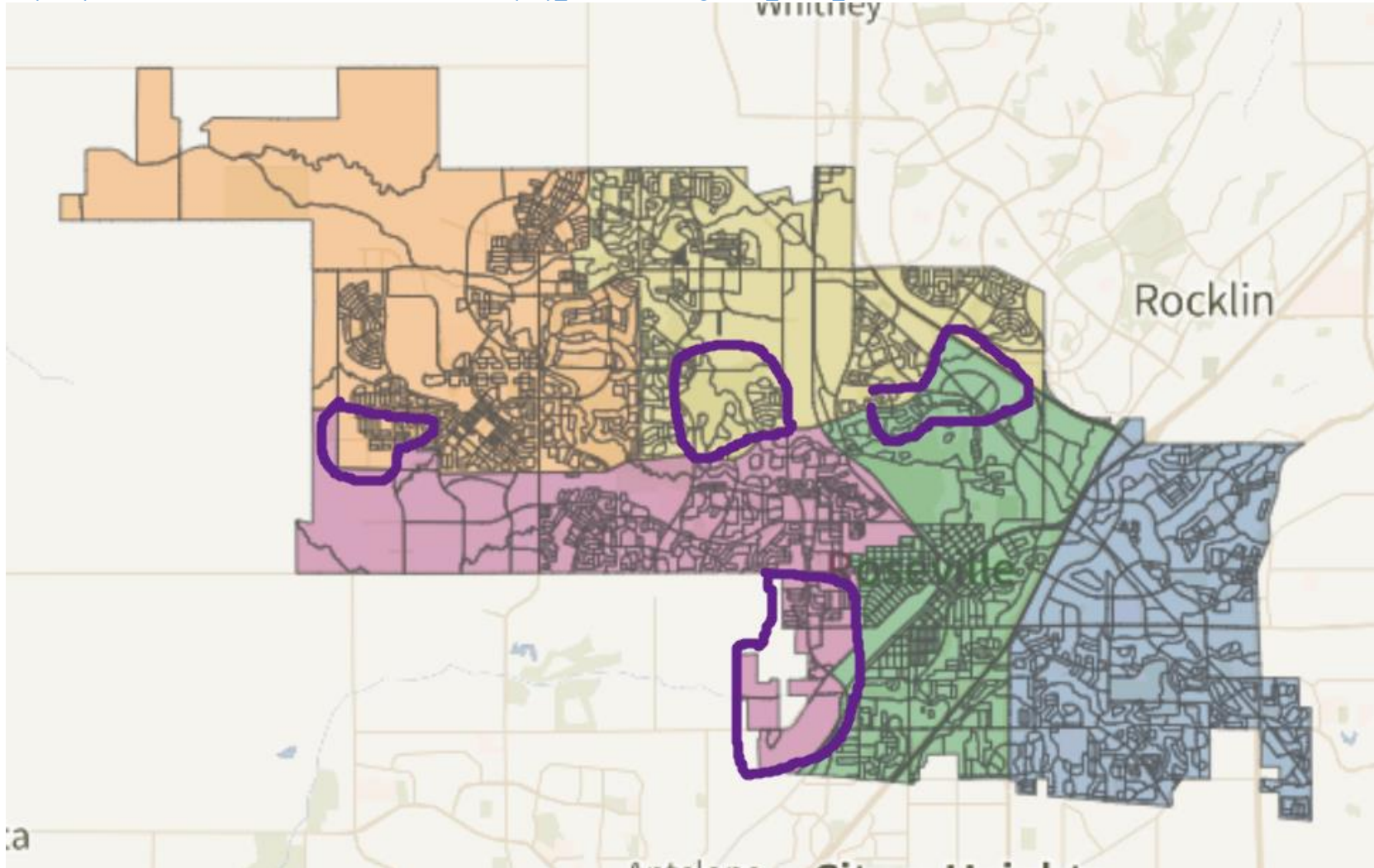


Map F alternative 1 (map 25): This one divides only 2 NA's - Pleasant Grove on the south side and Highland reserve on the south side. 6% deviation - Moved Pleasant Grove north of Pleasant Grove to D3, moved Highland Reserve south of Pleasant Grove to D2. (Cleans up Pleasant Grove line)

https://public.tableau.com/shared/HNJ37HPPG?:display_count=n&origin=viz_share_link

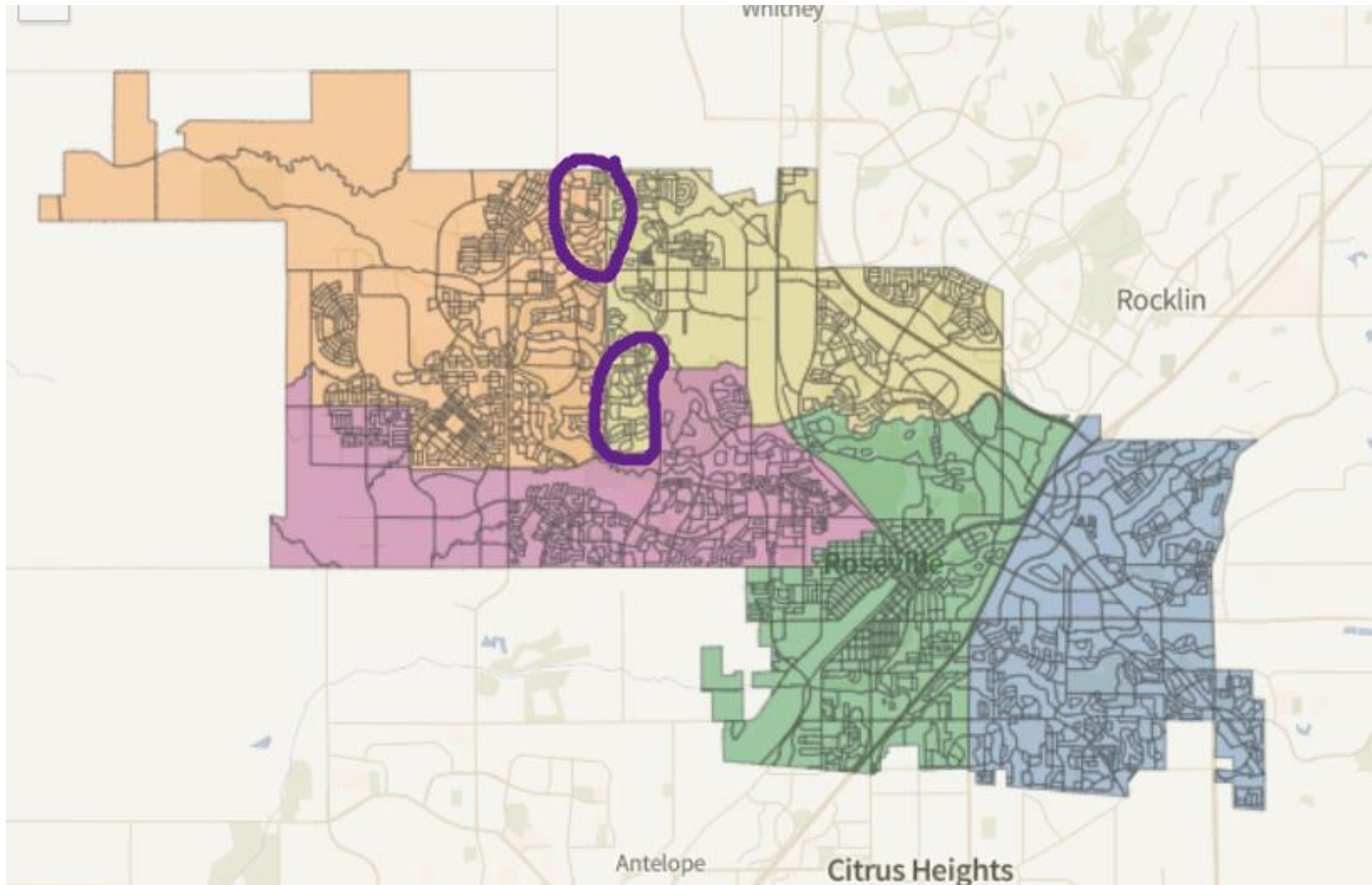


Map D alternative 1 (map 14): This one only divides 2 NA's - Pleasant Grove on the south side and Highland reserve on the south side. 6.6% deviation with both district 4 and 5 at 28k+ (lowest populations to allow for growth) and adjusts for rail station. Only 2 police districts divided which are the same as the 2 neighborhoods (Pleasant Grove and Highland Reserve) **Moved north Pleasant Grove to D3, moved south Highland Reserve and east of Roseville to D2, moved tail to D4, moved Solaire to D5 (Cleans up Pleasant Grove Line, west of Roseville rail yard)**
https://public.tableau.com/shared/4X77DS249?:display_count=n&:origin=viz_share_link



Map D alternative 2 (map 14): This one divides 2 NA's – Blue Oaks and Harding. 7.5% deviation, Only 1 police district divided, **Moved west Blue Oaks to D5 and moved south Quail Glen to D3 (Keeps Quail Glenn together)**

https://public.tableau.com/shared/KCR87ZH8R?:display_count=n&:origin=viz_share_link



Map D alternative 3 (map 14): This one divides 4 NA's – Blue Oaks, Pleasant Grove south side, Highland Reserve south side, and Vineyard, but adjusts for Railroad – 8% deviation and 28k+ are in D2 and D4, **Moved south Quail Glen to D3, moved North Pleasant Grove to D3, south Highland Reserve to D2 and Galleria Business district to D3 (Cleans up Pleasant Grove Line, Galleria business clean up, and west of Roseville rail yard)**

https://public.tableau.com/shared/48925NQHG?:display_count=n&:origin=viz_share_link

